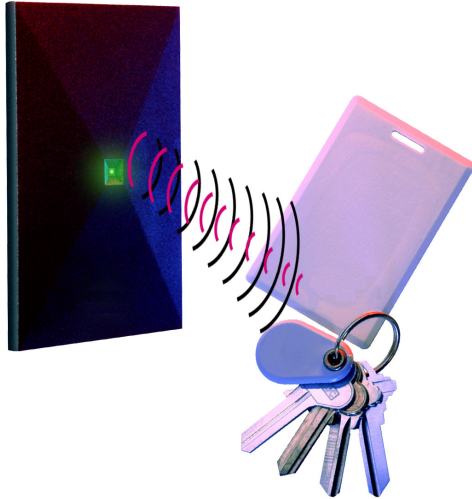




Farpointe Data's *Pyramid Series Proximity* is a line of OEM proximity readers, cards and tags designed for electronic access control. Based upon proven contactless digital radio frequency identification (RFID) technology, the line assures compatibility with the widest range of standard electronic access control systems by making use of industry standard interfaces, such as the Wiegand format. Today's electronic security access control professional will find the Pyramid Series to be engineered to meet their demanding needs.



The Pyramid Series offers a compelling selection of advanced, contactless, feature-rich products at very competitive prices. The line consists of a number of distinctive single-piece reader styles, including one of the smallest doorframe readers available, a vandal resistant reader, made of stainless steel and Fibertex®, and a reader ideal for parking applications.

Notable features for these low power, easy-to-install readers include Wiegand and ABA Track II magnetic stripe outputs, independently controllable multi-color LED and audio tone, reverse molded logos for easy private labeling, black and off-white covers with each reader, Control Cards to optimize local reader operation, the option of HID compatibility, as well as an Indala compatible reader — all backed by a lifetime warranty.

An equally comprehensive line of proximity cards and tags complements the Pyramid Series line. These include the PSC-1 Standard Light Proximity Card, the PSI-4 Image Technology Proximity Card, the PSM-2 Multi-Technology Proximity Card, and the PSK-3 Proximity Key Ring Tag. All of these proximity cards and tags may be used interchangeably with one another, or any of the Pyramid Series Readers.

**Pyramid Series Proximity is indeed "Your Intelligent Proximity Alternative"™.**

- Accuracy – Provides the highest levels of data accuracy, promoting system integrity.
- Aesthetic – Small and compact, readers blend inconspicuously with facility décor.
- Convenience – To be read, just get the card or tag close.
- Price – Reader, card and tag pricing is often lower than that of other ID technologies.
- Weather & Vandalism – Best resistance, with no slots to be jammed with ice, dirt, gum, or glue.
- Security – More than 100 trillion possible codes makes duplication a daunting proposition.
- High Throughput – Fast ID provides for the quickest access and egress, increasing productivity.
- Compatibility - Standard interfaces with the option of inter-operability (HID and Indala) provides real choice.
- Value – No moving parts, proximity can be expected to function for years to come.





**Table 1: Proximity Readers**

	<b>P-300 Cascade</b>	<b>P-400 Gibraltar</b>	<b>P-500 Alps</b>	<b>P-600 Rocky</b>	<b>P-700 Yukon</b>	<b>MCR-403 InStar</b>
<b>Read Range <sup>a</sup></b>	up to 4 inches (102 mm)	up to 1 inch (25 mm)	up to 5 inches (127 mm)	up to 4 inches (102 mm)	up to 14 inches (356 mm)	up to 4 inches (102 mm)
<b>Technology</b>	Proximity-RFID	Proximity-RFID	Proximity-RFID	Proximity-RFID	Proximity-RFID	Proximity-RFID
<b>Application</b>	doorframe mount	vandal resistance	wall mount	higher security, dual verification	parking, medium read range	doorframe and wall mount
<b>Compatibility</b>	Pyramid Series and HID (optional)	Pyramid Series and HID (optional)	Pyramid Series and HID (optional)	Pyramid Series and HID (optional)	Pyramid Series and HID (optional)	Indala and Keri
<b>Cover Colors</b>	black and off-white	stainless steel and Fibertex®	black and off-white	black and off-white	black	black
<b>Warranty</b>	lifetime	lifetime	lifetime	lifetime	lifetime	lifetime

a. Read range stated with PSC-1 Standard Light Proximity Card. It may be affected by local installation conditions.

**Table 2: Proximity Cards and Tags**

<b>Read Range <sup>a</sup>:</b>	<b>PSC-1 Standard Light</b>	<b>PSI-4 Image Technology</b>	<b>PSM-2 Multi Technology</b>	<b>PSK-3 Key Ring Tag</b>
<b>P-300 and P-600</b>	up to 4 inches (102 mm)	up to 3 inches (76 mm)	up to 3 inches (76 mm)	up to 2 inches (51 mm)
<b>P-400</b>	up to 1 inch (25 mm)	up to 1 inch (25 mm)	up to 1 inch (25 mm)	up to 1 inch (25 mm)
<b>P-500</b>	up to 5 inches (127 mm)	up to 4 inches (102 mm)	up to 4 inches (102 mm)	up to 3 inches (76 mm)
<b>P-600</b>	up to 4 inches (102 mm)	up to 3 inches (76 mm)	up to 3 inches (76 mm)	up to 1 inch (25 mm)
<b>P-700</b>	up to 14 inches (356 mm)	up to 10 inches (254 mm)	up to 10 inches (254 mm)	up to 6 inches (152 mm)
<b>Technology</b>	Passive Proximity - RFID	Passive Proximity - RFID	Passive Proximity - RFID	Passive Proximity - RFID
<b>Application</b>	"Clamshell" style	Imageable	Imageable, optional magnetic stripe	Key Fob
<b>Color</b>	off-white	white	white	light gray
<b>Dye Sublimation Imaging</b>	use PVC-9 overlay	direct	direct	n/a
<b>Warranty</b>	lifetime	lifetime	one-year	lifetime

a. Read range may be affected by local installation conditions.

Farpointe Data, Inc. was formerly known as Pyramid Associates, Inc. While maintaining its hallmarks of quick delivery and efficient customer service, Farpointe will focus on the advancement of contactless, proximity, RFID reader, card, and tag solutions for the electronic security access control industry.

Farpointe Data reserves the right to change specifications without notice.

©2004 Farpointe Data, Inc. - All other trademarks are the property of their respective owners.

Protected by U.S. and Worldwide Patents.

Data Sheet

Pyramid Series Proximity™

